

## State of Wyoming Corner Record

(In compliance with the *CORNER PERPETUATION AND FILING ACT*, Wyoming Statutes, 1997, Section 33-29-140, et. seq., and the Rules and Regulations of the Board of Registration for Professional Engineers and Professional Land Surveyors)

Reverse side of this form may be used if more space is needed.

Record of original survey and citation of source of historical information (if corner is lost or obliterated). Description of corner monumentation evidence found and/or monument and accessories established to perpetuate the location of this corner. Sketch of relative location of monument, accessories, and reference points with course and distance to adjacent corner(s) (if determined in this survey). Method and rationale for reestablishment of lost or obliterated corner.

**G.L.O. Record:** U.S. Deputy Surveyor, Henry G. Hay, September 2, 1870.; 80.00 Chains.....Set Granite Boulder 18 x 15 x 4 for corner to Sec's 26, 27, 34 & 35

**Found:** 18 ins. x 14 ins. x 4 ins. granular granite stone with two chiseled grooves on the East face and one chiseled groove on the South face.

**Set:** 2 ½ ins. diam. aluminum post, 30 ins. long, 27 ins. in the ground with a 3 ¼ ins. aluminum cap marked as noted below. Buried a 1 x 1 x 2 ins. orange flourescent magnetic module in the bottom of the monument hole. Buried the original stone south as a memorial and raised a collar of stone around the monument. Set a 5 ft. steel fence post witness 1 ft. north.

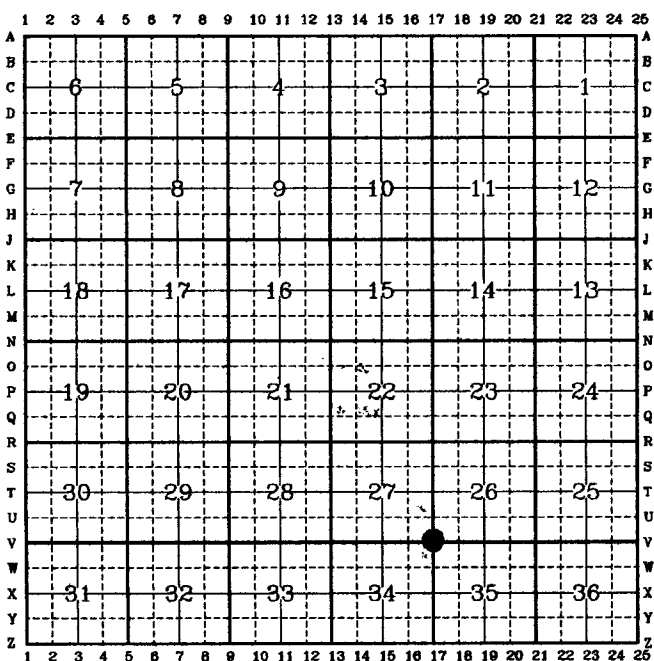
**Aluminum Cap Markings**  
**T13N R67W**  
**S27 | S26**  
**S34 | S35**  
**1999**  
**P.L.S. 2927**

See back of this sheet for measurements or other found or set monuments in the area.

Date of Field Work: Nov., 1998; Jan., 1999.

Office Reference: A.V.I. Job No. 2-2085C

**CROSS INDEX DIAGRAM**

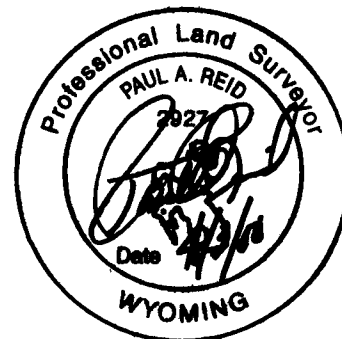


**Firm/Agency, Address**  
 Paul A. Reid, P.L.S.  
 A.V.I., p.c.  
 2035 Westland Road  
 Cheyenne, WY 82001

**Telephone Number:**  
 (307) 637-6017

This corner record was prepared by me or under my direction and supervision.

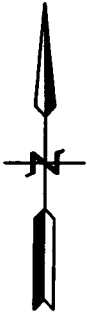
*SEAL & SIGNATURE*



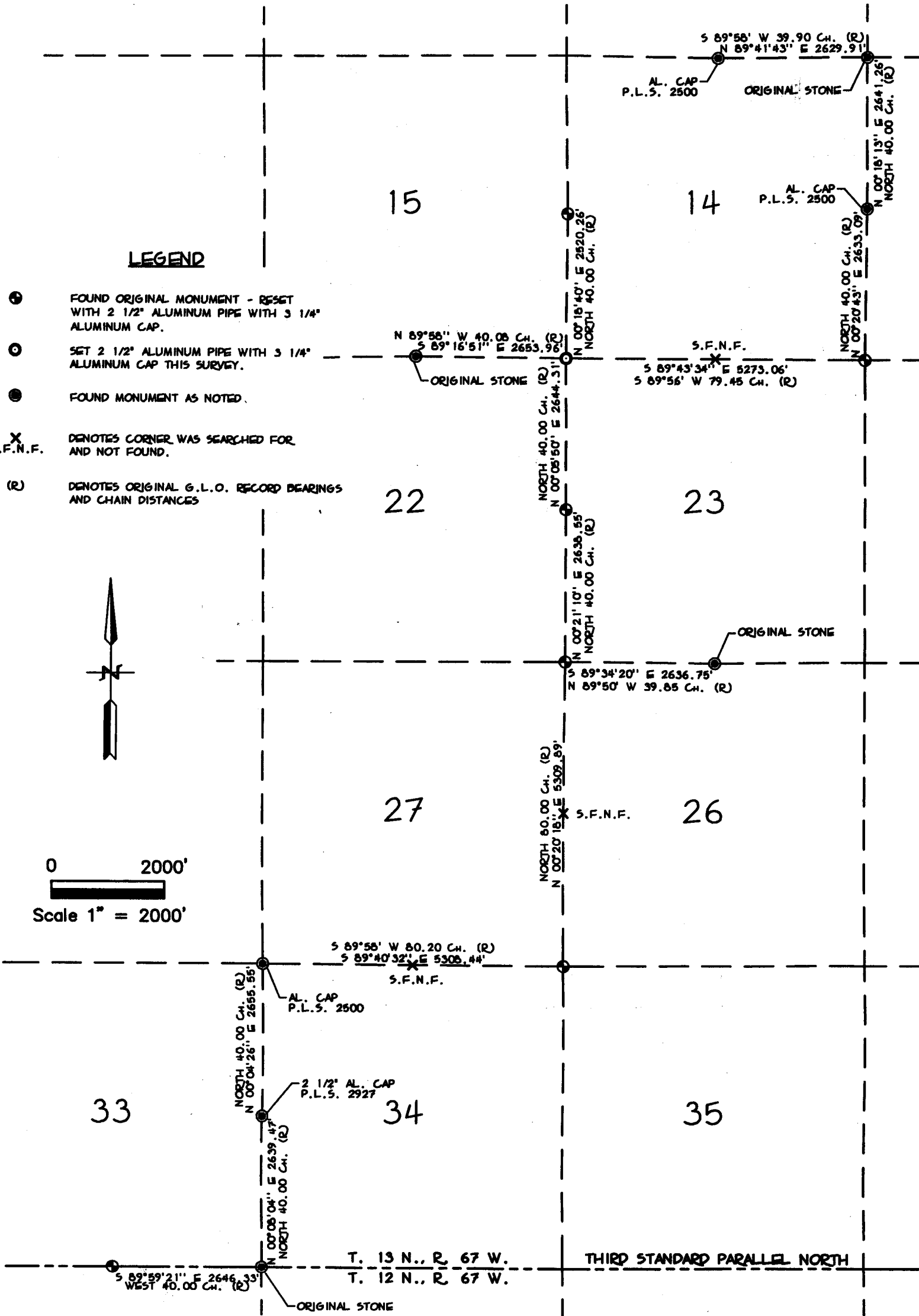
**Corner Name:** SW    **Section:** 26    **T.13N., R.67W.;** 6<sup>th</sup> P.M.    **Cross-Index No.:** V-17  
**SBRPEPLS/PLSW:March 1994**

**LEGEND**

- ⊕ FOUND ORIGINAL MONUMENT - RESET WITH 2 1/2" ALUMINUM PIPE WITH 3 1/4" ALUMINUM CAP.
- ⊙ SET 2 1/2" ALUMINUM PIPE WITH 3 1/4" ALUMINUM CAP THIS SURVEY.
- FOUND MONUMENT AS NOTED.
- X S.F.N.F. DENOTES CORNER WAS SEARCHED FOR AND NOT FOUND.
- (R) DENOTES ORIGINAL G.L.O. RECORD BEARINGS AND CHAIN DISTANCES



0 2000'  
  
 Scale 1" = 2000'



**SKETCH OF SURVEY**

T. 13 N., R. 67 W., 6TH P.M.  
 LARAMIE COUNTY, WYOMING

RECORDED 4/03/2000 AT 2:07 PM REC# 271550 3K# 1550 PG# 1072  
 DEBRA K. LATHROP, CLERK OF LARAMIE COUNTY, WY PAGE 2 OF 2